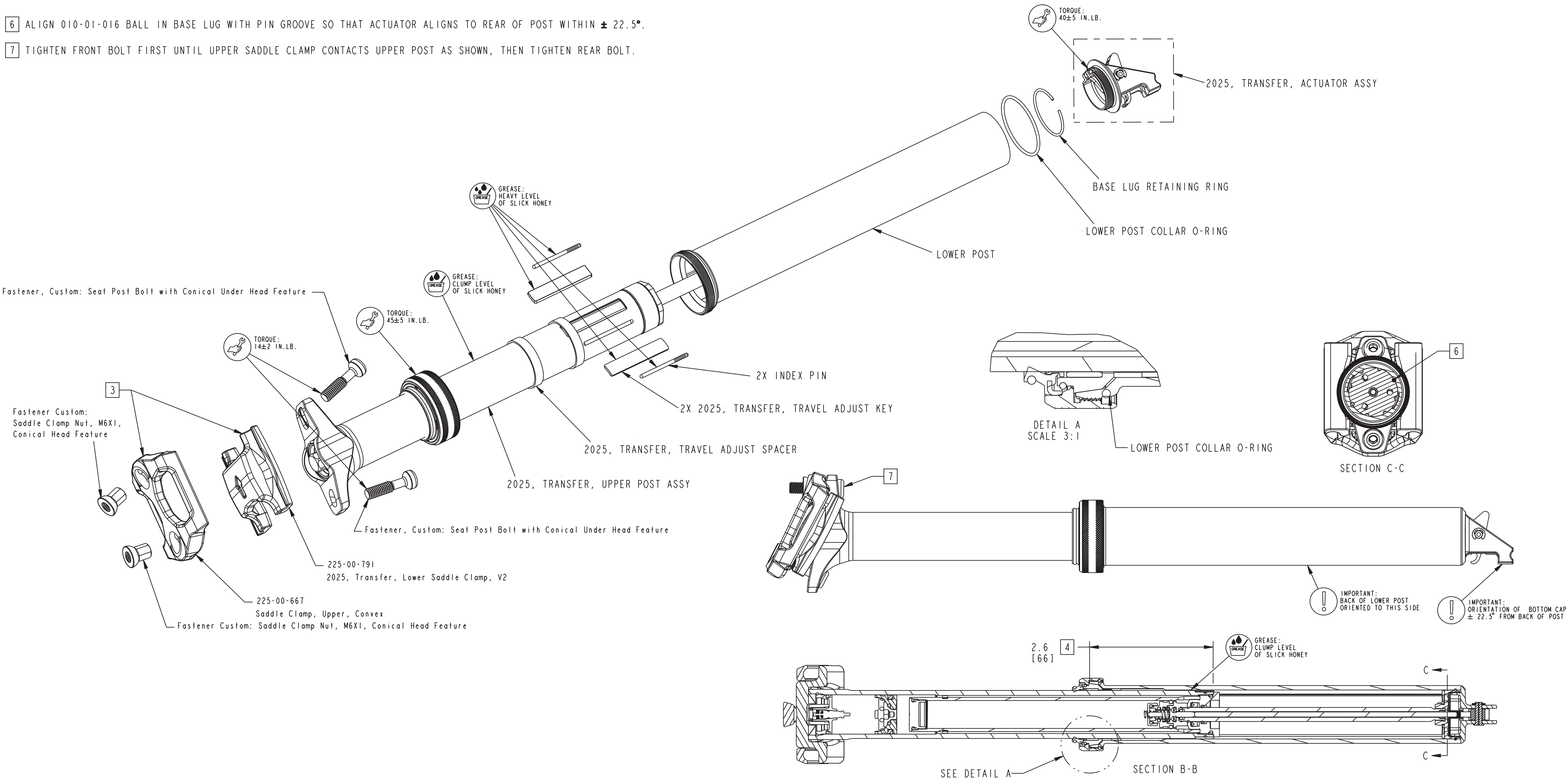


- 3 ARROWS ON BOTH UPPER AND LOWER CLAMPS MUST POINT TOWARDS THE FRONT OF THE POST.
- 4 CLUMP LEVEL GREASE TO BE APPLIED TO THE TOP .5" OF LOWER POST ID PIN ENGAGEMENT REGION.
- 6 ALIGN 010-01-016 BALL IN BASE LUG WITH PIN GROOVE SO THAT ACTUATOR ALIGNS TO REAR OF POST WITHIN  $\pm 22.5^\circ$ .
- 7 TIGHTEN FRONT BOLT FIRST UNTIL UPPER SADDLE CLAMP CONTACTS UPPER POST AS SHOWN, THEN TIGHTEN REAR BOLT.



Fastener, Custom: Seat Post Bolt with Conical Under Head Feature

Fastener Custom: Saddle Clamp Nut, M6X1, Conical Head Feature

Fastener Custom: Seat Post Bolt with Conical Under Head Feature

Fastener Custom: Saddle Clamp Nut, M6X1, Conical Head Feature

**FOX Factory, Inc.**  
 130 Hangar Way, Watsonville, CA 95076 USA  
 Ph 831-768-1100  
 Fax 831-768-9312

TITLE  
 Assy DWG, 2025, Transfer, Assy, Complete

SIZE DWG. NO.  
 D1

PLOT SCALE 1:1

PROPRIETARY - THIS DOCUMENT CONTAINS CONFIDENTIAL, PROPRIETARY INFORMATION THAT IS FOR PROPERTY. DO NOT DISCLOSE TO OR DUPLICATE FOR OTHERS EXCEPT AS AUTHORIZED BY FOX.